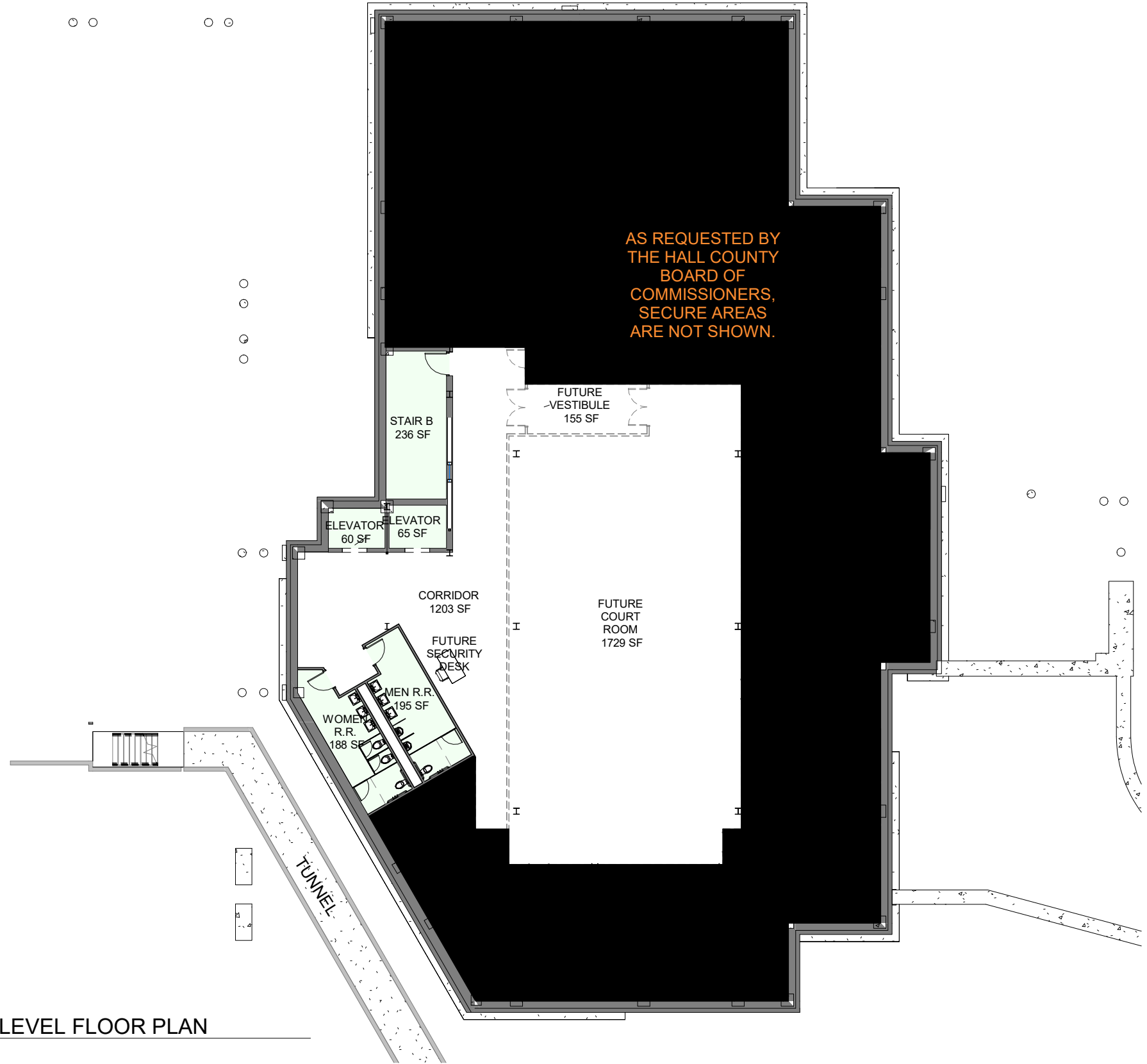


Department Legend

- OTHER
- PUBLIC
- SECURE

NOTE:
ITEMS SHOWN IN DASHED LINE INDICATE
FUTURE WORK.



1

BASEMENT LEVEL FLOOR PLAN

1" = 20'-0"



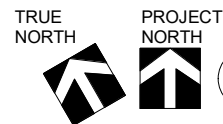
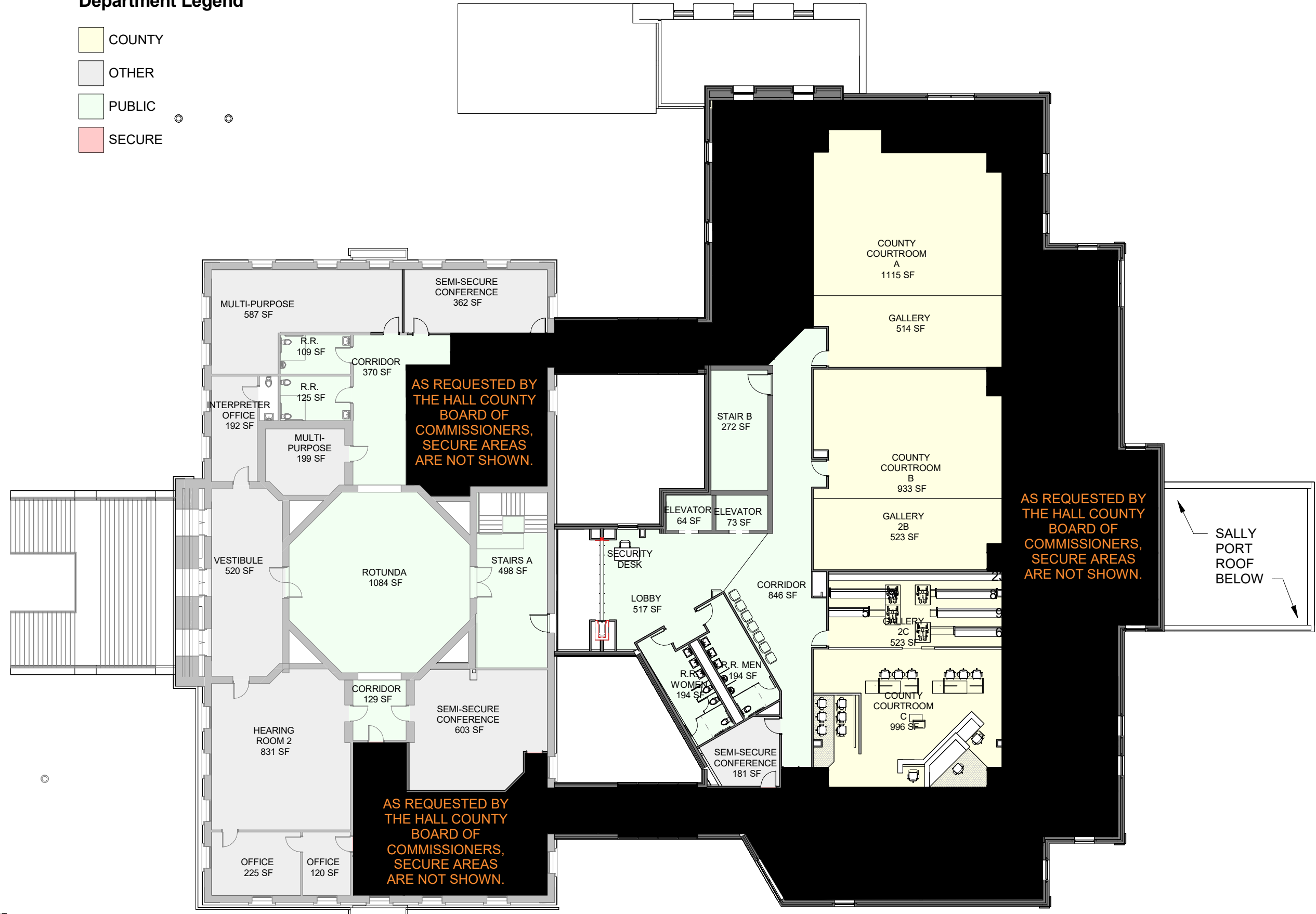
Department Legend

- COUNTY
- DISTRICT
- OTHER
- PUBLIC
- SECURE
- SEMI-SECURE



Department Legend

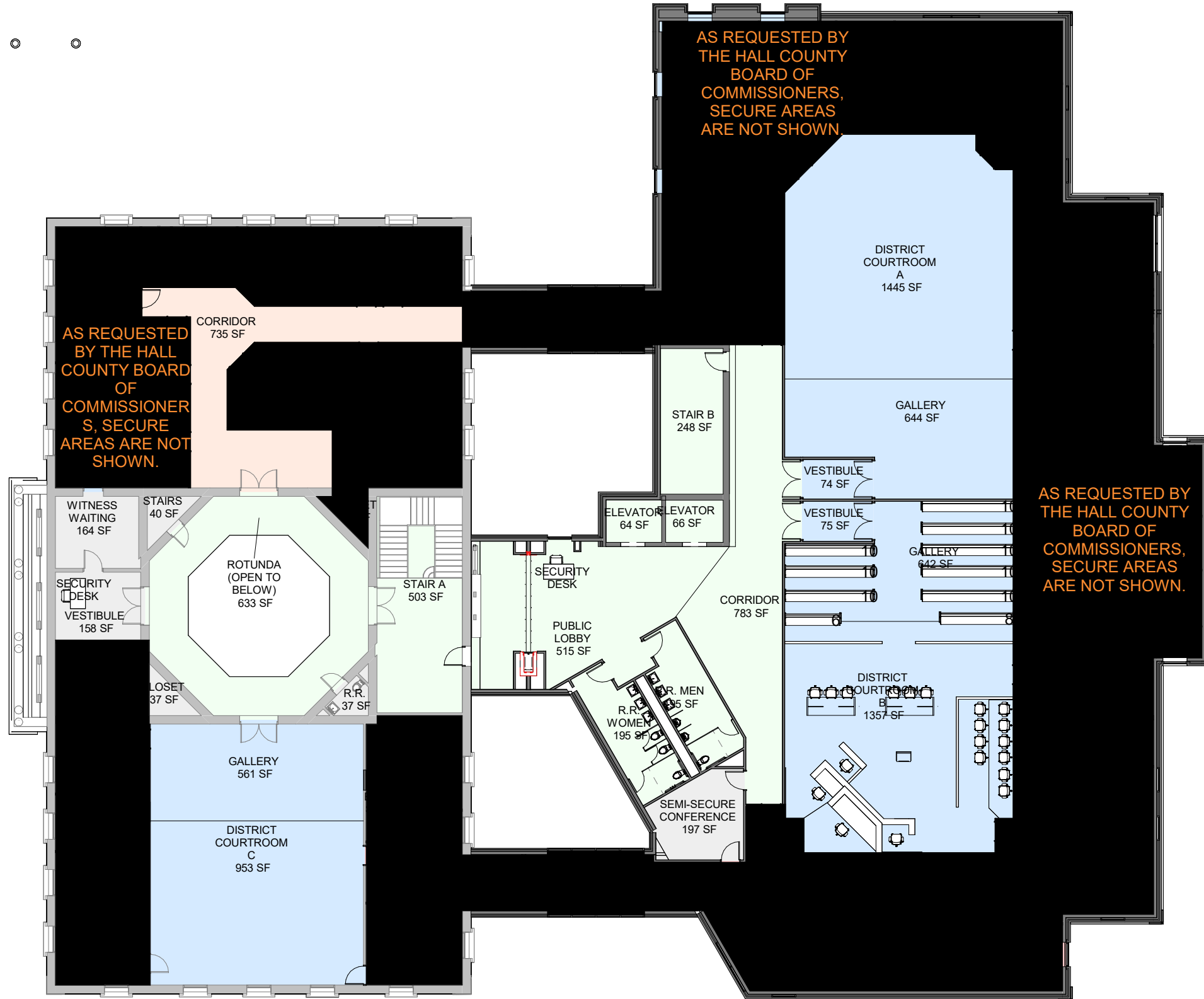
- COUNTY
- OTHER
- PUBLIC
- SECURE



1 02 - SECOND LEVEL(1)
1" = 20'-0"

Department Legend

- DISTRICT
- OTHER
- PUBLIC
- SECURE
- SEMI-SECURE



TRUE NORTH

PROJECT NORTH

1

03 - THIRD LEVEL(1)

1" = 20'-0"

Lincoln
1221 N Street, Suite 600
Lincoln NE 68508

Norfolk
130 South 5th Street
Norfolk, NE 68701

Vermillion
15 East Main, Suite 201
Vermillion SD 57069



DD-103
10/08/2024

Hall County
Courthouse Addition and Renovation
Third Level